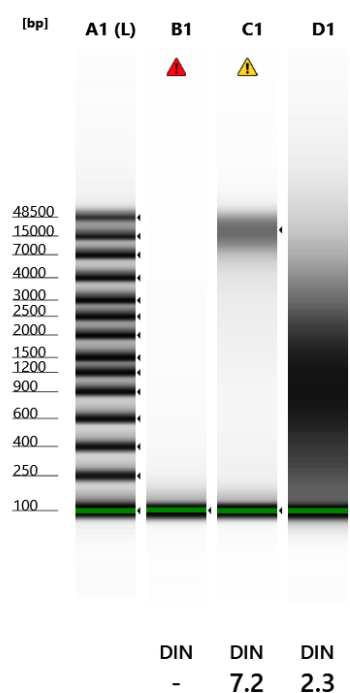


Filename: 2023-12-08 - 12.49.23.gDNA



Default image (Contrast 100%)



Sample Info

Well	DIN	Conc. [ng/ul]	Sample Description	Alert	Observations
A1	-	50.5	Ladder		Ladder
B1	-	1.35	TOOTH	▲	Sample concentration outside functional range for DIN and the assay
C1	7.2	9.78	BUCCAL SWAB	▲	Sample concentration outside recommended range
D1	2.3	58.1	FFPE		

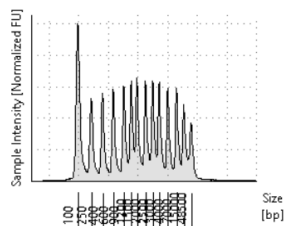
Compact Peak Table

Well	Sample Description	Size [bp]	Calibrated Conc. [ng/ul]	Assigned Conc. [ng/ul]	% Integrated Area	From [bp]	To [bp]	Peak Comment	Observations
A1	Ladder	100	8.50	8.50	-	69	163		Lower Marker
A1	Ladder	250	3.93	-	7.87	189	321		
A1	Ladder	400	3.90	-	7.82	341	501		
A1	Ladder	600	3.99	-	8.00	529	774		
A1	Ladder	900	3.91	-	7.83	796	1074		
A1	Ladder	1200	3.93	-	7.88	1074	1367		
A1	Ladder	1500	4.50	-	9.02	1367	1817		
A1	Ladder	2000	4.06	-	8.14	1817	2304		
A1	Ladder	2500	3.94	-	7.90	2304	2797		
A1	Ladder	3000	4.19	-	8.39	2797	3634		
A1	Ladder	4000	3.84	-	7.70	3634	5751		
A1	Ladder	7000	3.71	-	7.43	5838	11343		
A1	Ladder	15000	3.29	-	6.59	11343	23721		
A1	Ladder	48500	2.71	-	5.43	23721	77533		
B1	TOOTH	100	8.50	8.50	-	66	149		Lower Marker
C1	BUCCAL SWAB	100	8.50	8.50	-	67	146		Lower Marker
C1	BUCCAL SWAB	19229	6.25	-	97.93	5366	>60000		
C1	BUCCAL SWAB	-	-	-	-	-	-		Sample Well
D1	FFPE	100	8.50	8.50	-	65	142		Lower Marker
D1	FFPE	970	4.12	-	100.00	883	1045		

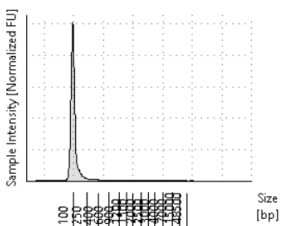
Compact Region Table

WellId	Sample Description	From [bp]	To [bp]	Average Size [bp]	Conc. [ng/µl]	Region Molarity [nmol/l]	% of Total	Region Comment	Color
C1	BUCCAL SWAB	1200	>60000	-	8.16	1.78	83.39		
D1	FFPE	200	>60000	-	56.0	110	96.31		

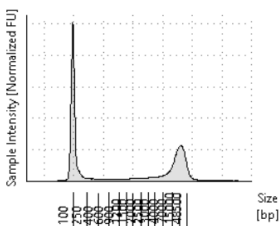
A1: Ladder



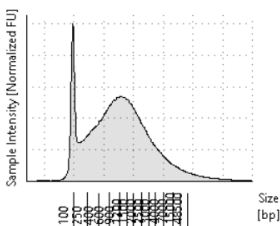
B1: TOOTH

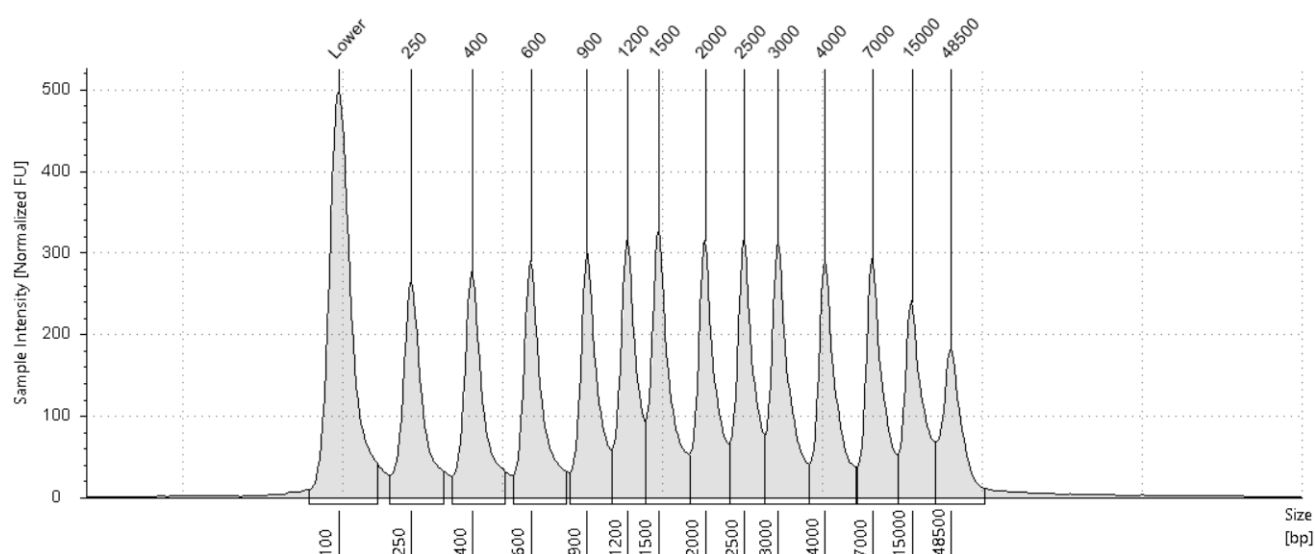


C1: BUCCAL SWAB



D1: FFPE



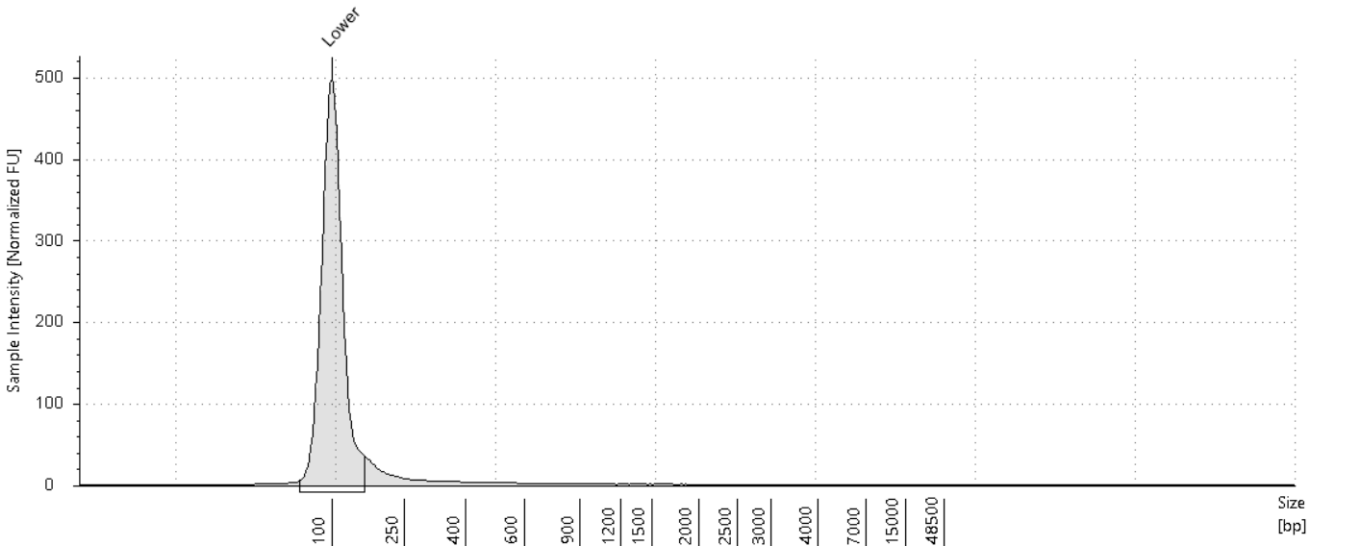
A1: Ladder**Sample Table**

Well	DIN	Conc. [ng/ul]	Sample Description	Alert	Observations
A1	-	50.5	Ladder		Ladder

Peak Table

Size [bp]	Calibrated Conc. [ng/ul]	Assigned Conc. [ng/ul]	% Integrated Area	From [bp]	To [bp]	Peak Comment	Observations
100	8.50	8.50	-	69	163		Lower Marker
250	3.93	-	7.87	189	321		
400	3.90	-	7.82	341	501		
600	3.99	-	8.00	529	774		
900	3.91	-	7.83	796	1074		
1200	3.93	-	7.88	1074	1367		
1500	4.50	-	9.02	1367	1817		
2000	4.06	-	8.14	1817	2304		
2500	3.94	-	7.90	2304	2797		
3000	4.19	-	8.39	2797	3634		
4000	3.84	-	7.70	3634	5751		
7000	3.71	-	7.43	5838	11343		
15000	3.29	-	6.59	11343	23721		
48500	2.71	-	5.43	23721	77533		

B1: TOOTH



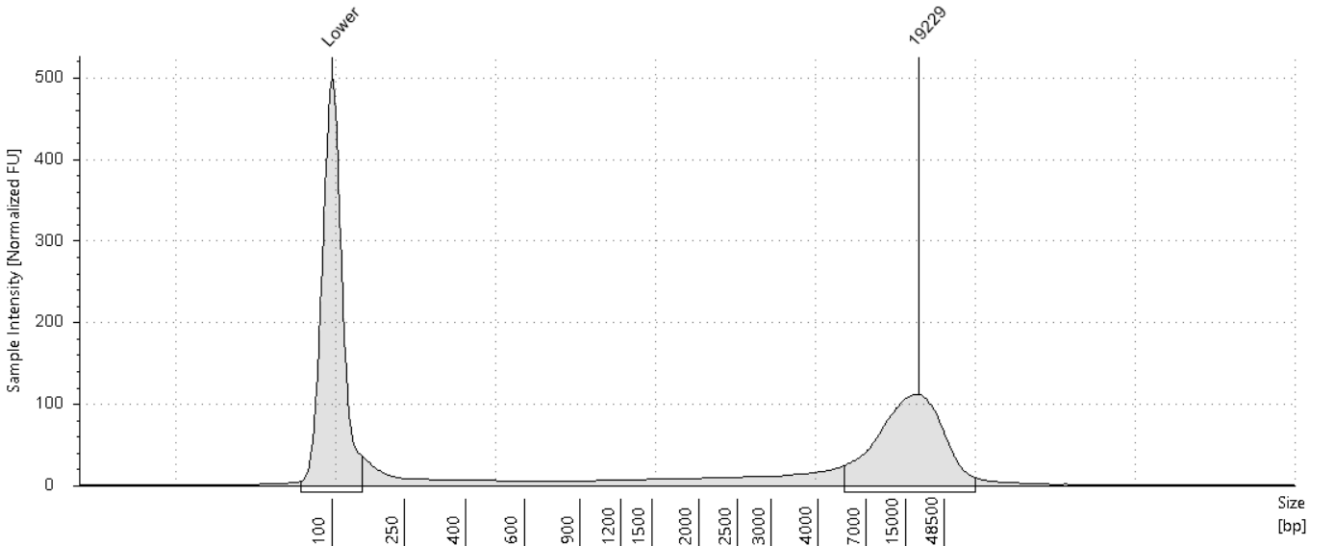
Sample Table

Well	DIN	Conc. [ng/ul]	Sample Description	Alert	Observations
B1	-	1.35	TOOTH		Sample concentration outside functional range for DIN and the assay

Peak Table

Size [bp]	Calibrated Conc. [ng/ul]	Assigned Conc. [ng/ul]	% Integrated Area	From [bp]	To [bp]	Peak Comment	Observations
100	8.50	8.50	-	66	149		Lower Marker

C1: BUCCAL SWAB

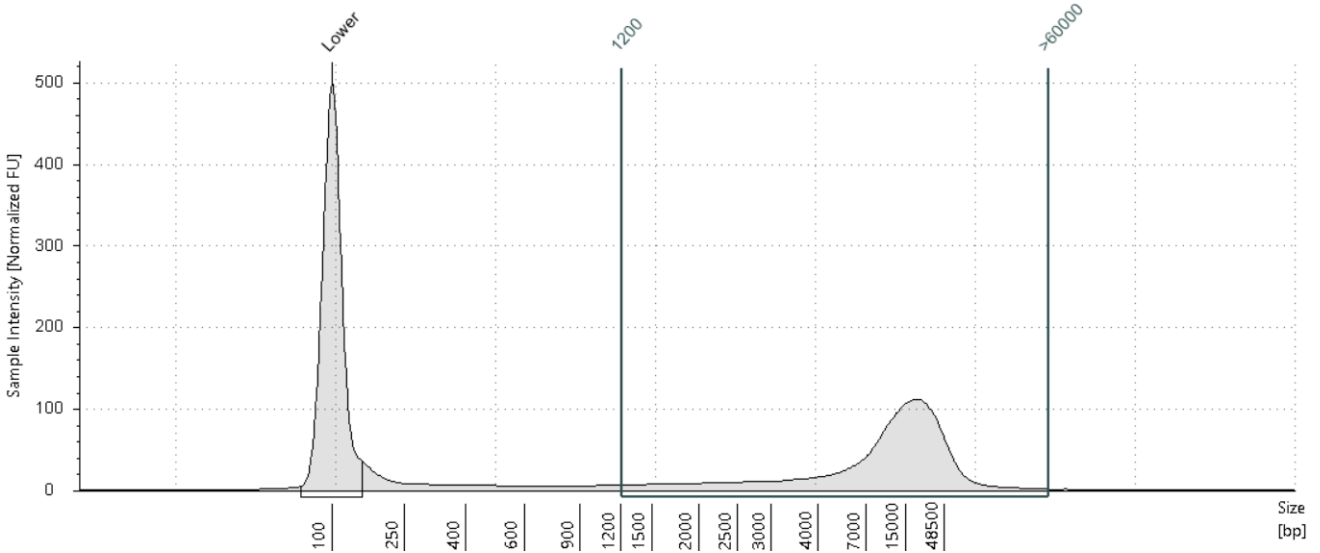


Sample Table

Well	DIN	Conc. [ng/μl]	Sample Description	Alert	Observations
C1	7.2	9.78	BUCCAL SWAB		Sample concentration outside recommended range

Peak Table

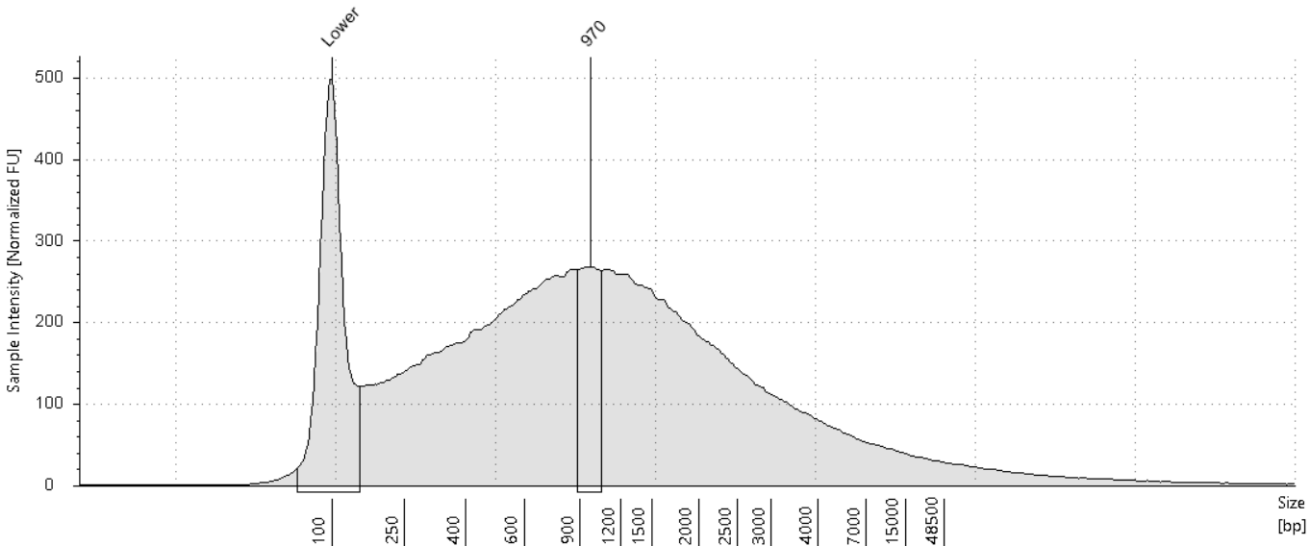
Size [bp]	Calibrated Conc. [ng/μl]	Assigned Conc. [ng/μl]	% Integrated Area	From [bp]	To [bp]	Peak Comment	Observations
100	8.50	8.50	-	67	146		Lower Marker
19229	6.25	-	97.93	5366	>60000		
-	-	-	-	-	-		Sample Well



Region Table

From [bp]	To [bp]	Average Size [bp]	Conc. [ng/μl]	Region Molarity [nmol/l]	% of Total	Region Comment	Color
1200	>60000	-	8.16	1.78	83.39		

D1: FFPE

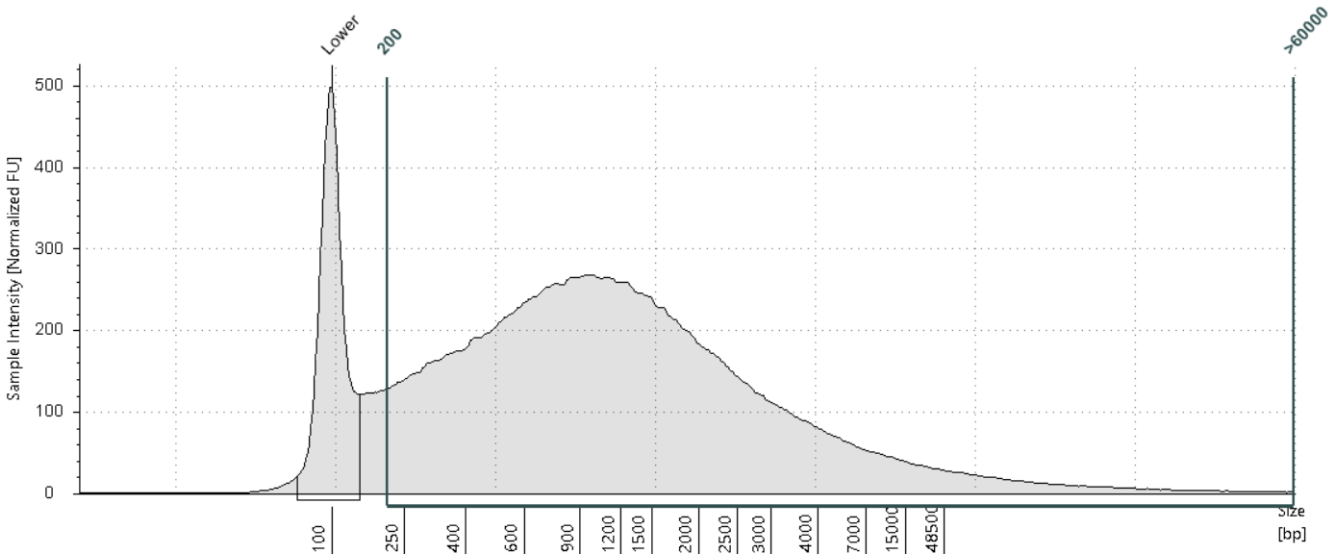


Sample Table

Well	DIN	Conc. [ng/μl]	Sample Description	Alert	Observations
D1	2.3	58.1	FFPE		

Peak Table

Size [bp]	Calibrated Conc. [ng/μl]	Assigned Conc. [ng/μl]	% Integrated Area	From [bp]	To [bp]	Peak Comment	Observations
100	8.50	8.50	-	65	142		Lower Marker
970	4.12	-	100.00	883	1045		



Region Table

From [bp]	To [bp]	Average Size [bp]	Conc. [ng/μl]	Region Molarity [nmol/l]	% of Total	Region Comment	Color
200	>60000	-	56.0	110	96.31		

Calibration

Concentration Settings

Calibration mode: Lower Marker
Normalise peaks from: Lower Marker
Fitting type: Linear Regression

Experiment Properties

Run Properties

Analysis Software Version	5.1.0.47235
Filename	C:\Users\UCT\Documents\Agilent\TapeStation Data\Forensics\Adele\2023-12-08 - 12.49.23.gDNA
Assay	Genomic DNA
Run End Date	2023-12-08T12:56:48+02:00
Last Saved Under Version	5.1.0.47235
DIN Version	5.1.0.47235
Study	
Comments	

ScreenTape Device 1

Username	UCT
ScreenTape Device ID	01-S025-231020-01-000169
Expiry Date	2023-12-22T23:59:59
ScreenTape Device History	First run 08 Dec 2023, 1 run(s) performed
Temperature [°C]	20.7
Electrophoresis Time [s]	231
Instrument Type	4200 TapeStation (G2991A)
Instrument Serial Number	DEDA01874
Notes	
ScreenTape Device Run Date	2023-12-08T12:49:23+02:00
Reagent Lot #	0006743700
ScreenTape Lot #	0203058-259

Controller Environment

Computer	DESKTOP-UC33E4D
Instrument Controller Software Version	5.1.0.47235
First Run Analysis Version	5.1.0.47235
Operating System	Microsoft Windows 11 Pro