

Domestic Electric Loads Seminar

Implementation of an LV QOS Reporting System

Hennie Mostert

12 November 2014

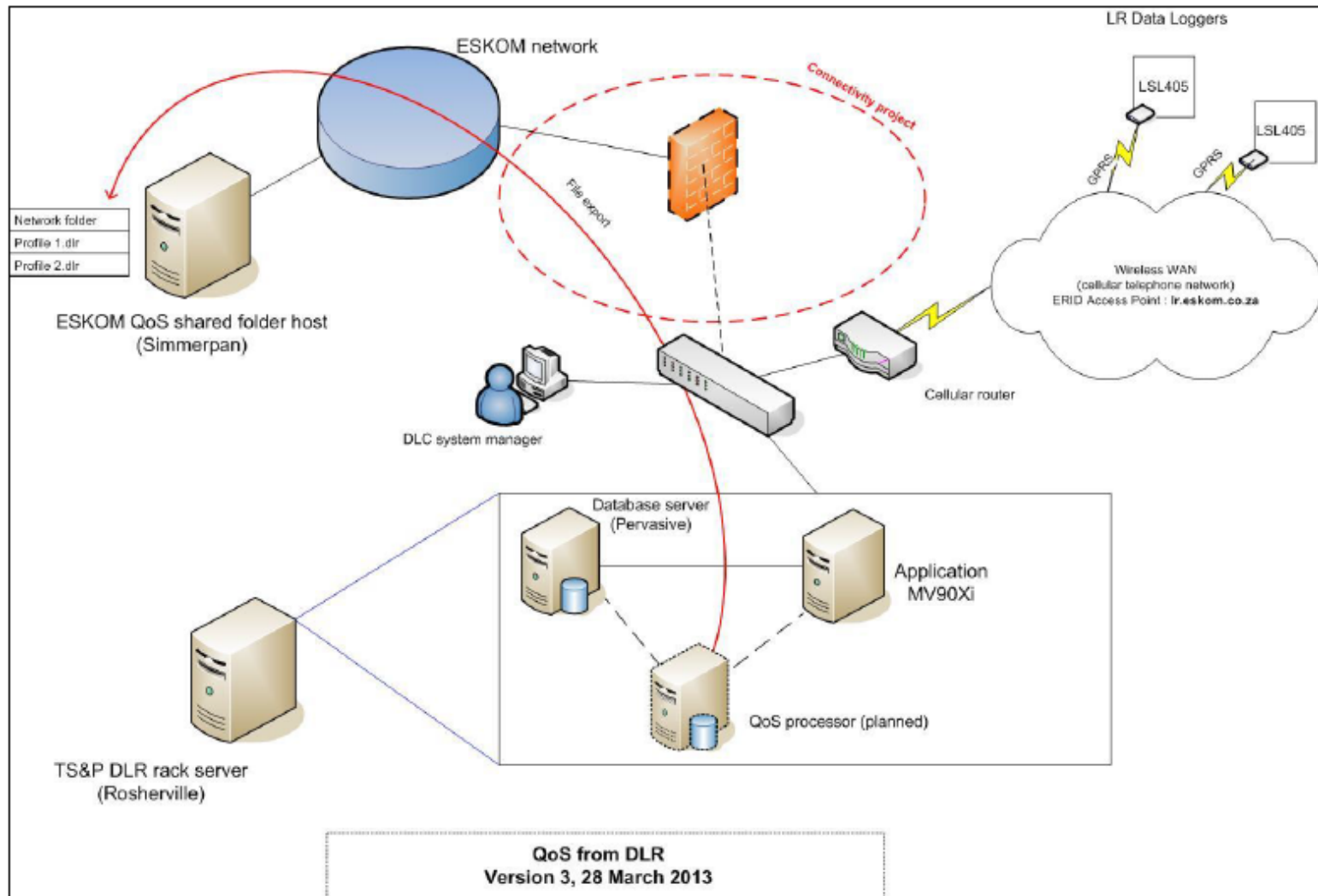


- Background
- DLR Program and QOS partnership
- How does it work?
- What do get from it?
- Closing Remark

- More than 3m residential customers supplied at LV, what do they want?
- Customers to receive a voltage of 230V $\pm 10\%$ - NRS048-2
- Challenges :
 - 1) Final customer numbers
 - 2) Final Load
 - 3) Construction Challenges, including phase connections
 - 4) Controlled busbars
 - 5) Control of trfr ratios / tap positions
 - 6) Network configuration changes
- Regulatory Reporting – small sample of 1 / 20 000 – placement bias
- Old Measurement Sites

- 10 years of Development
- Less resources – Man & Machine
- Utilize the strengths in the business (National group vs OU's)
- No biasing in meter placement

How does it work?



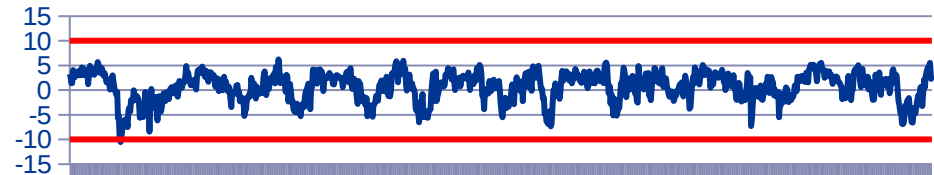
What do we get from it?

- Converted 5 – 10 min Voltage RMS values for compliance testing
- Possible Interruption Data in future
- Voltage Dips and Voltage unbalance not possible
- Summated data (Max/Min/Ave, Daily/Weekly 95/5% and - 99/1 % values
- Exceedance reports from QOS Database based on summated data and NRS048 compatibility values (limits)
- Detail Voltage profiles to assist in addressing site specific problems
- Identifying of national issues





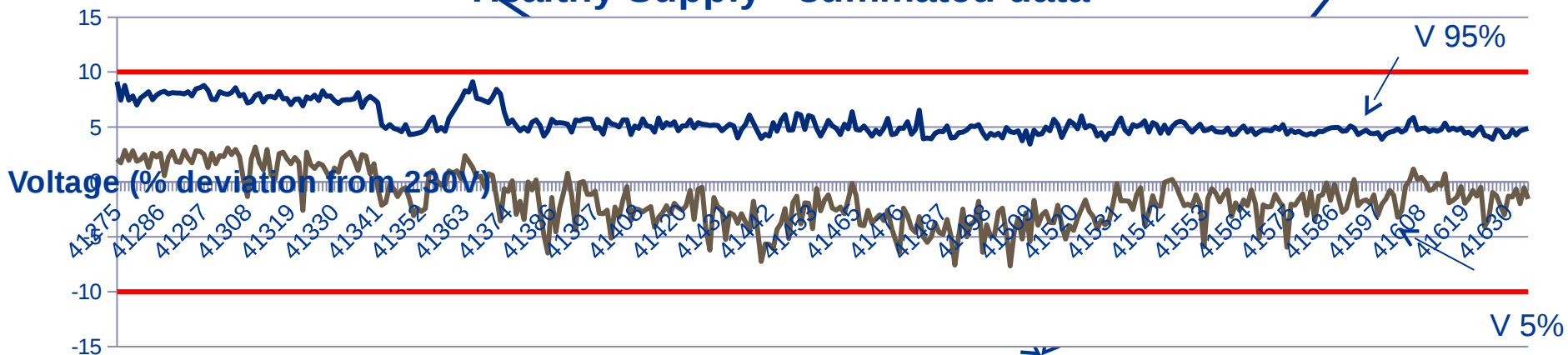
Healthy Supply 10min. data



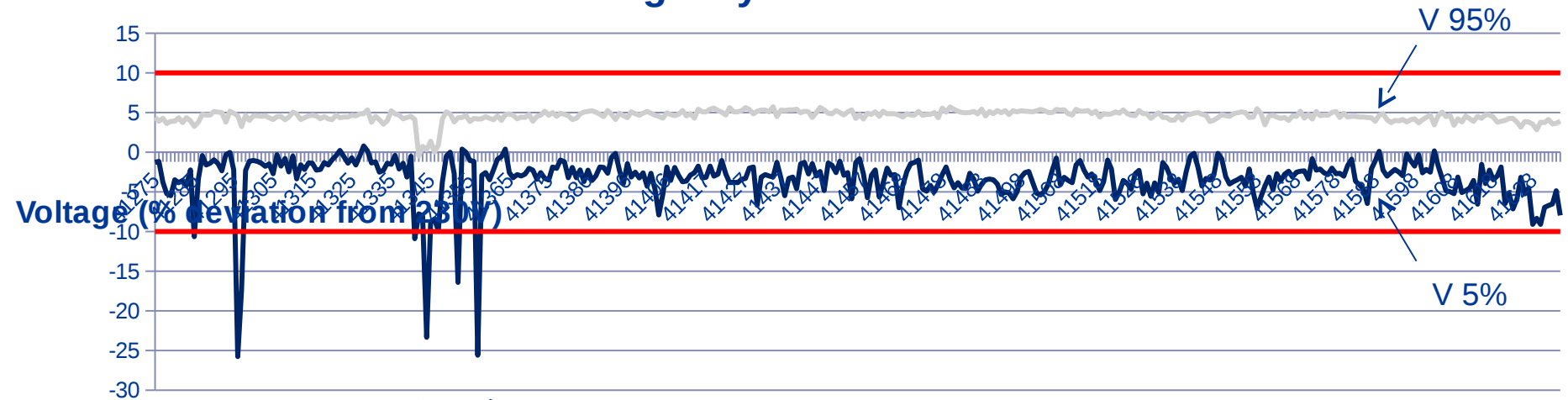
Voltage (% deviation from 230V)

41497.010416666664
41498.732638888891
41500.454861111109
41502.177083333336

Healthy Supply - summated data

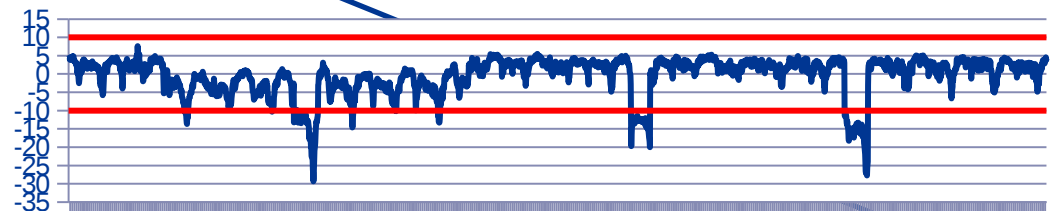


Contingency - Summated data



Voltage (% deviation from 230V)

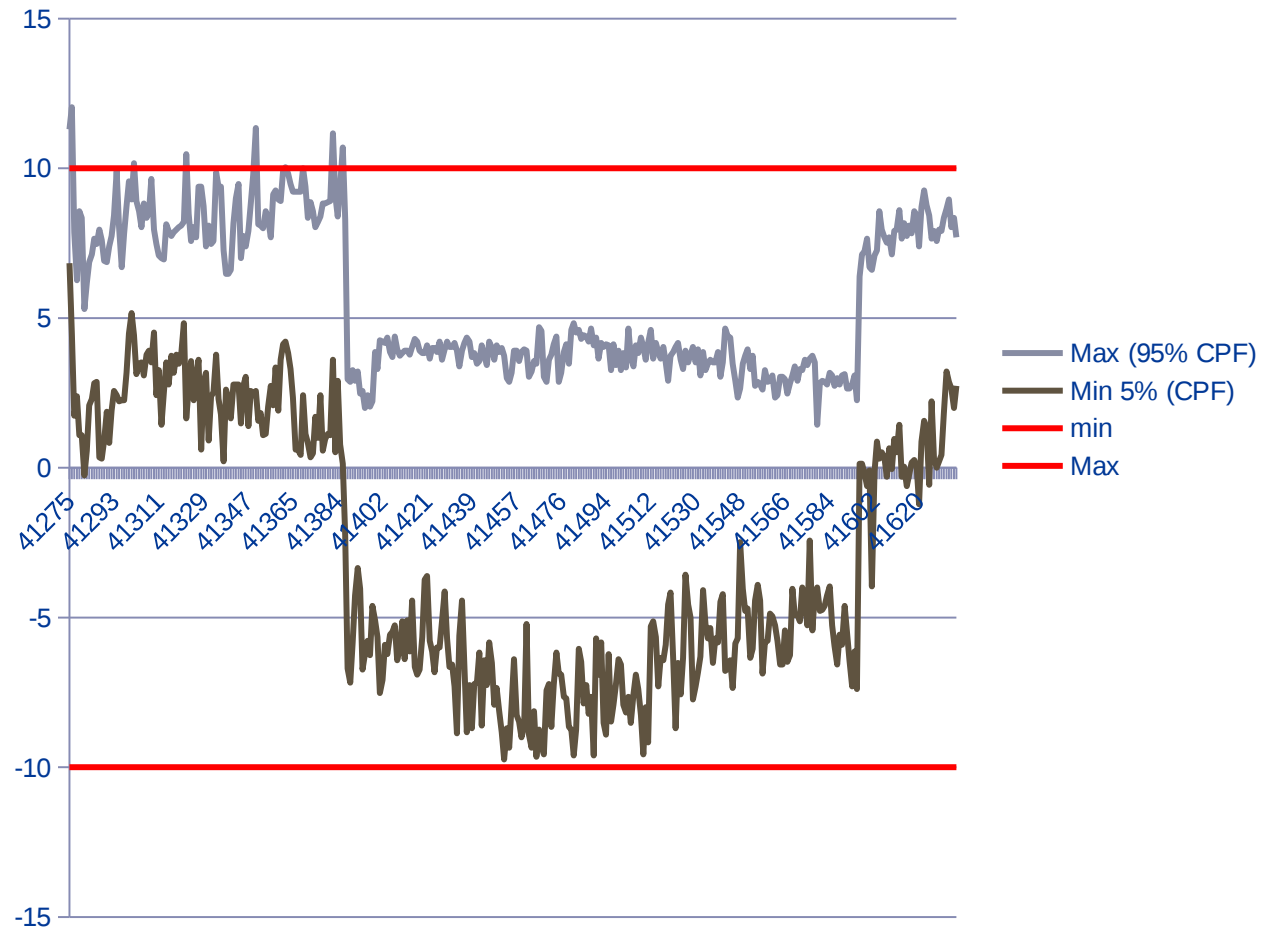
Contingency - 10m data



41339.04513888891
41342.60763888891
41346.23263888891
41349.73958333336
41353.29513888891
41356.79513888891
41360.35763888891

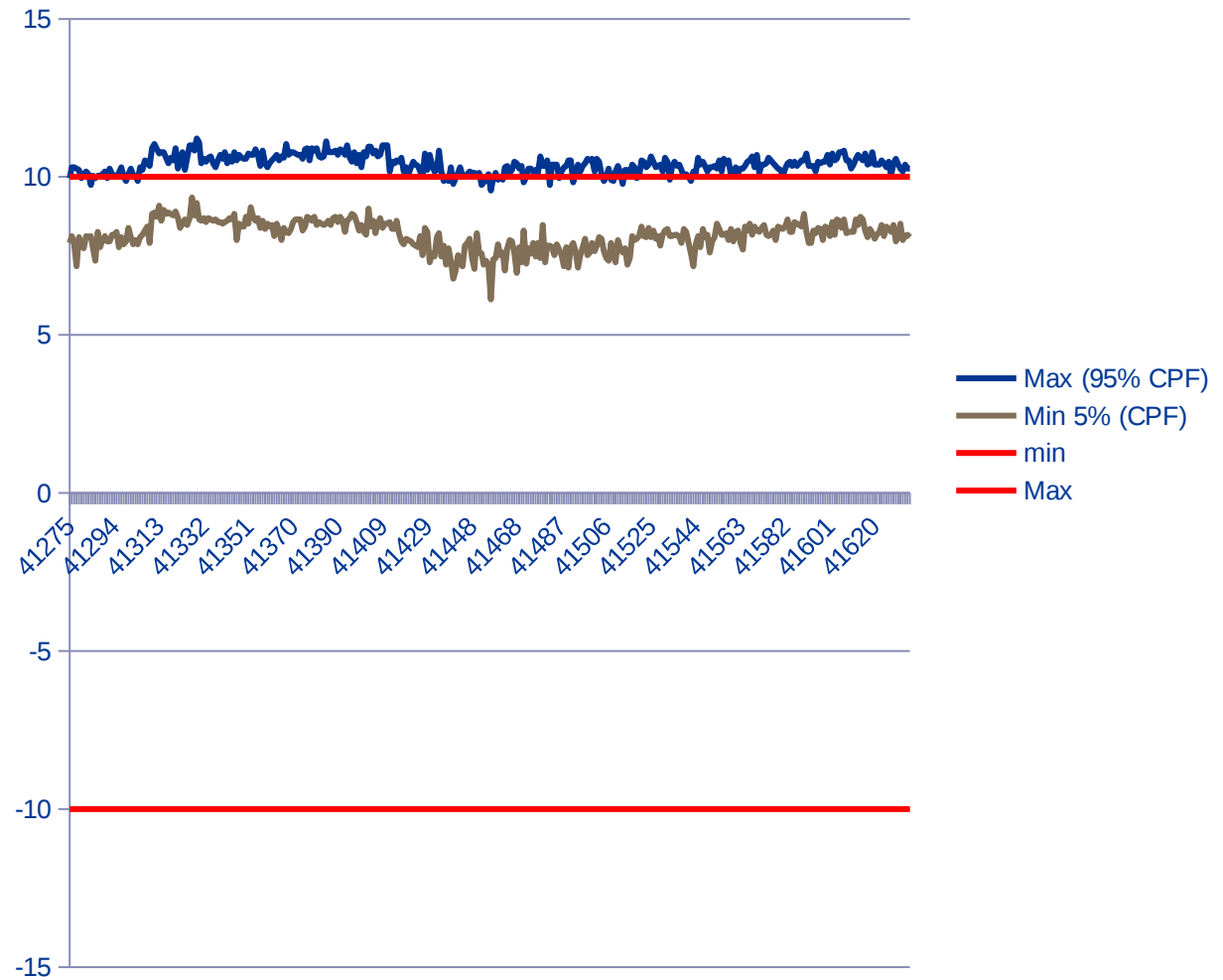
Operational changes

Voltage (% deviation 230V)



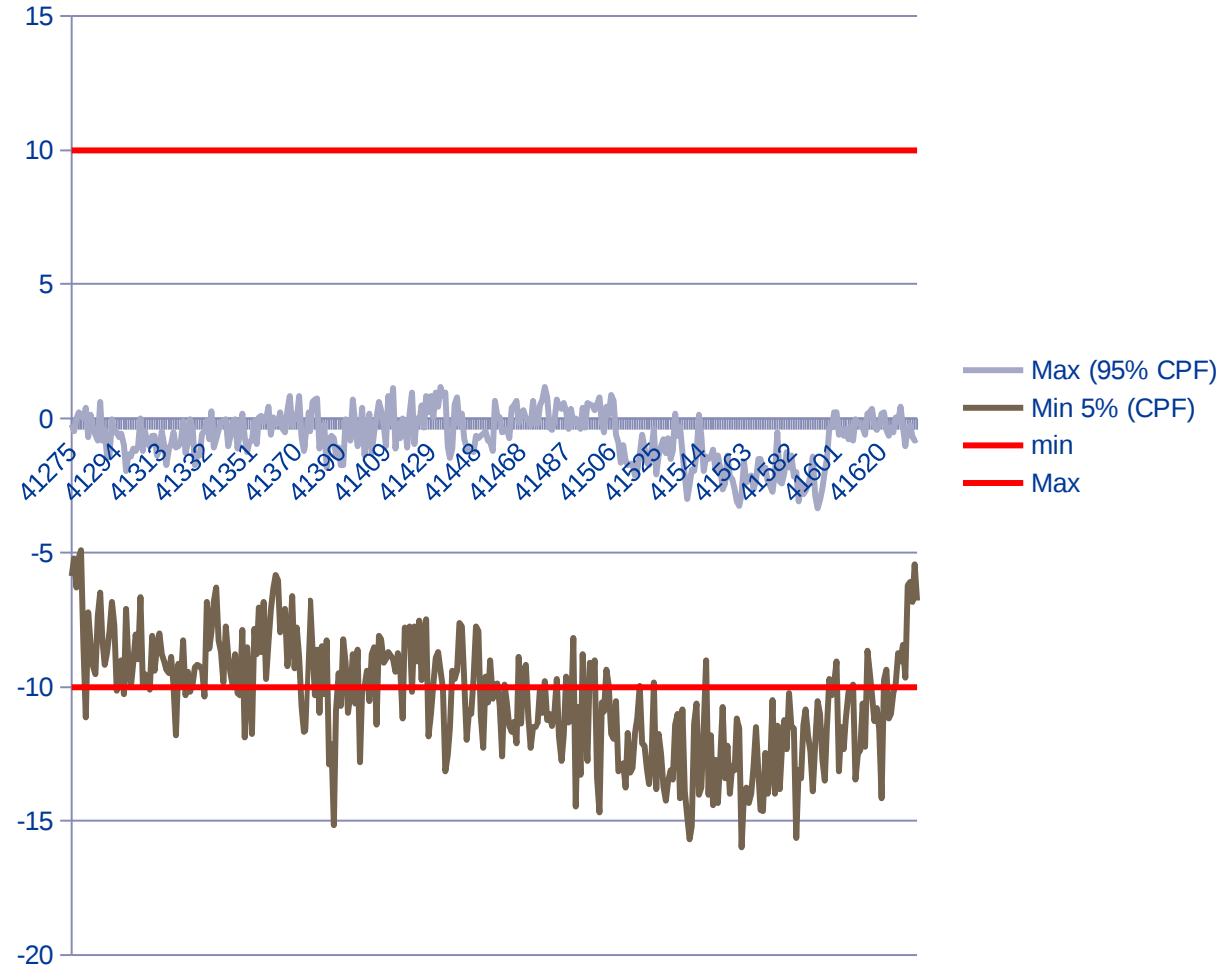
Very High Control Voltage

Voltage (% deviation from 230V)



Avoidable Low Voltage

Voltage (% deviation from 230V)



We have demonstrated that we can achieve a lot more in the business if we are prepared to share, adapt and support each other – all for the benefit of the people that pays our salaries – our **customers**.

Thank you!