

Retrospective analysis for the South African hake resource Reference Case Assessment

Rebecca A. Rademeyer and Doug S. Butterworth

November 2017

Figures 1 and 2 plot spawning biomass and recruitment results respectively for a retrospective analysis of the South African hake resource for the 2017 Reference Case (Rademeyer and Butterworth, 2017).

Over recent years the assessment has tended to somewhat underestimate *M. paradoxus* and somewhat overestimate *M. capensis* spawning biomass. There are no obvious retrospective patterns in recruitment estimates, though recent recruitment for both species was appreciably overestimated for the assessment when ended in 2012.

Reference

Rademeyer, R.A. and Butterworth, D.S. 2017. Specifications of the South African hake 2017 reference case assessment. DAFF Branch Fisheries document: FISHERIES/2017/NOV/SWG-DEM/56: 40pp. (as revised with respect to MSY-related measures in MARAM/IWS/2017/Hake/P2)

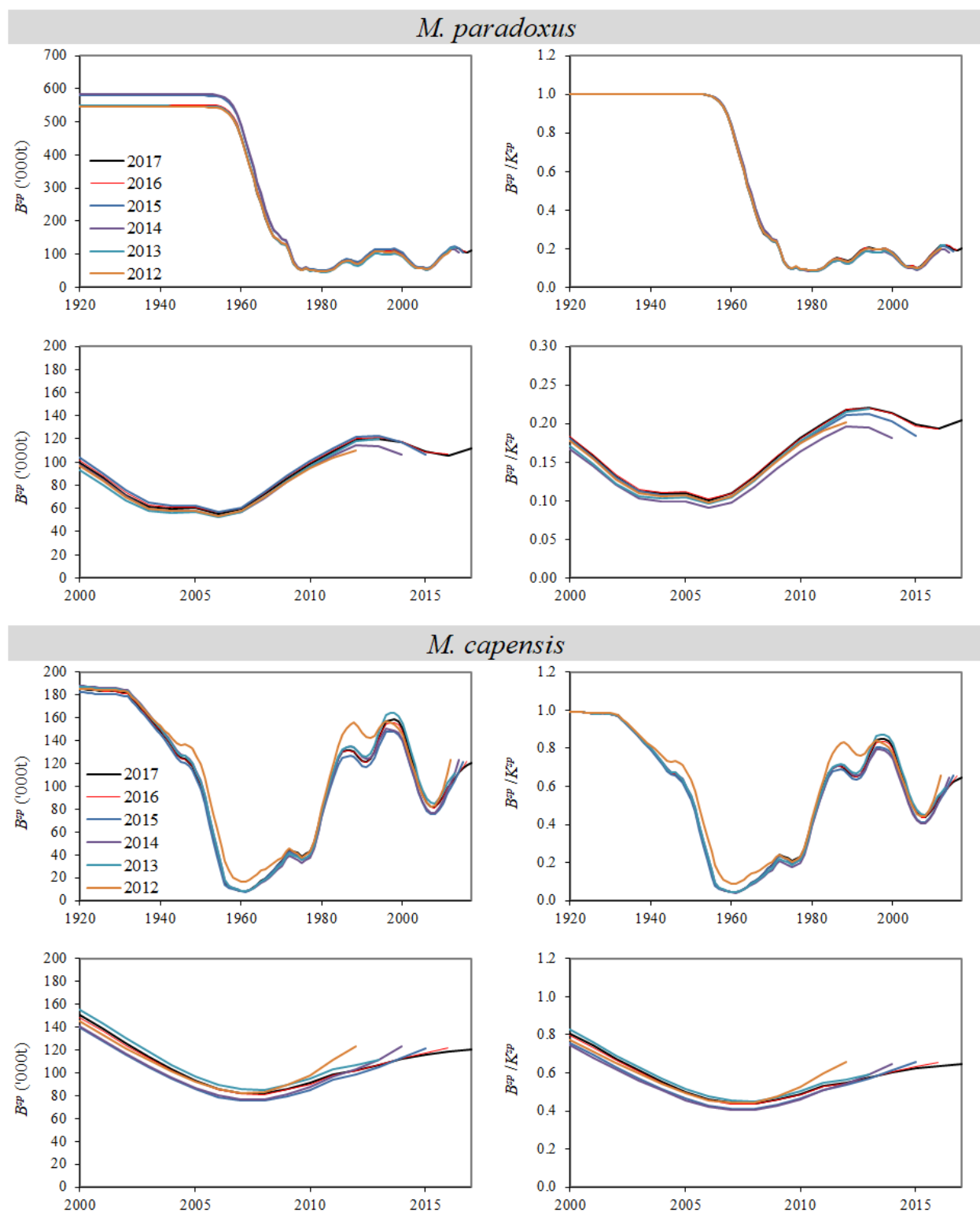


Figure 1: Spawning biomass trajectories (in absolute terms, and relative to pre-exploitation level). The second and last rows repeat the first and third rows but for a different year range.

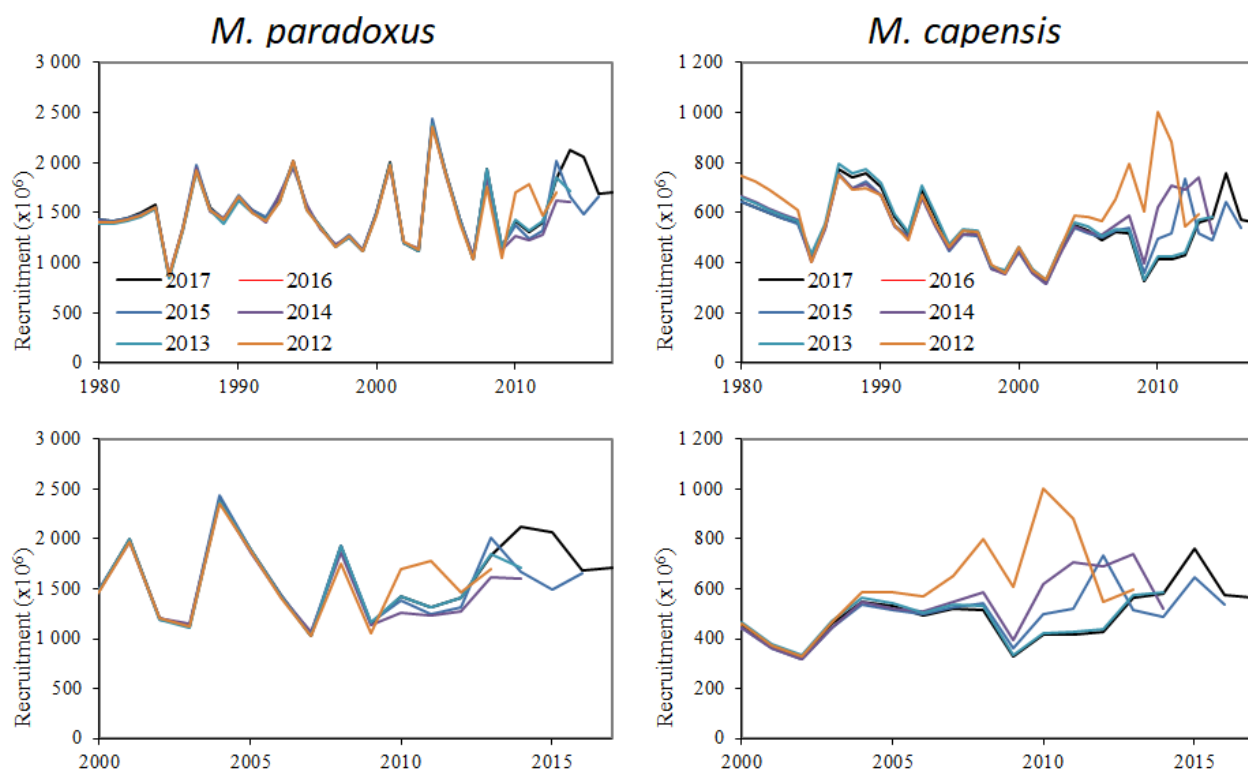


Figure 2: Recruitment trajectories.

